



## Scopes of Business

### Satellite Services

- Operation of teleports
- Operation of VSAT networks
- Operation of geostationary satellites  
\*(planned in 2022)
- Operation of SAR satellites  
\*(planned in 2022)

### Data Center

- Data services for Premium customers
- Cloud services for Business customers
- Cloud-X – Software
- Operation of individual high encrypted networks

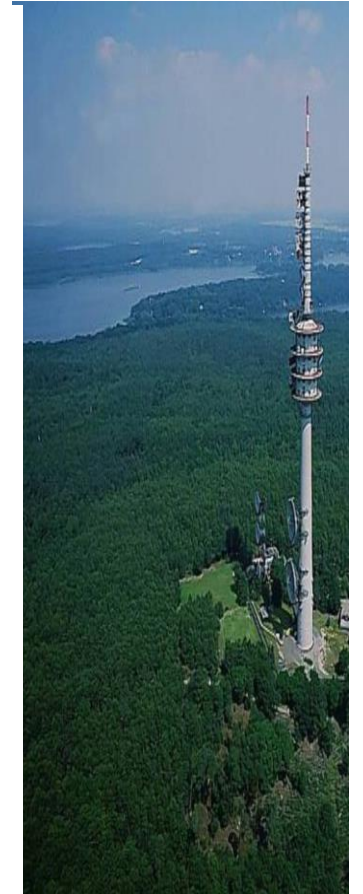
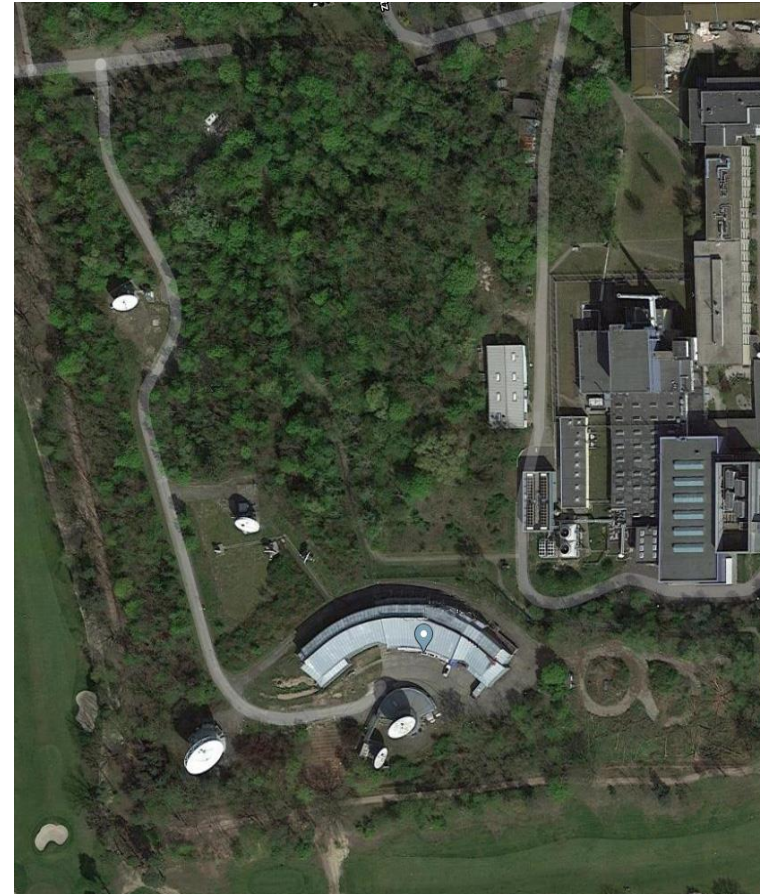




## Satellite Services – Earth stations

### Teleport Berlin Wannsee

- 7 basements for antennas 9m - 16m and unlimited VSAT antennas on 39.000 m<sup>2</sup>
- Full redundant access to the internet backbone with 3x 20 Gbit/s
- C- band/ Ku- Band/ Ka- Band
- Full redundant power system for 4 weeks autonomous operation
- ISO 9001; ISO 27001

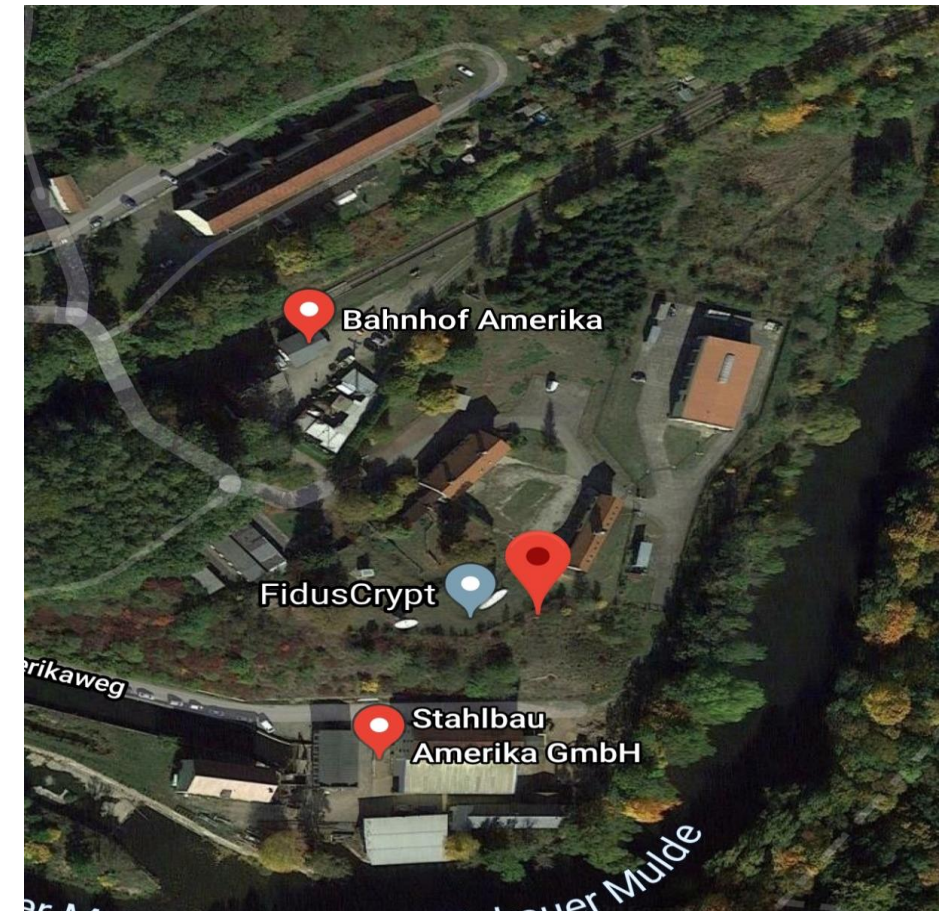




## Satellite Services – Earth stations

### Teleport and research/ development center Amerika/ Penig

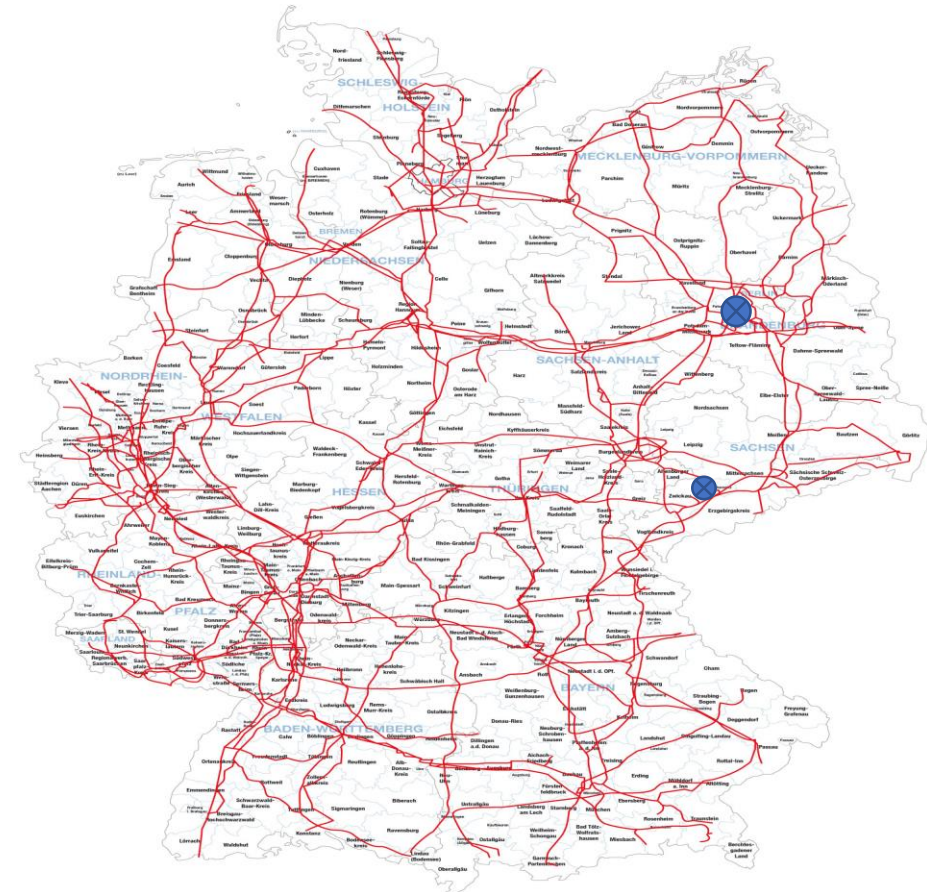
- 4 basements for antennas 9m - 11m and unlimited VSAT antennas on 60.000 m<sup>2</sup>
- Full redundant access to the internet backbone
- C- band/ Ku- Band
- Full redundant power system for 4 weeks autonomous operation
- Manufacturing of MARS system
- ISO 9001; ISO 27001







## Access to the Internet Backbone





## MARS- Mobile Satellite Network Sub Center

- Setup of wireless and data networks over satellite connections in a short time in all climates

### Applications:

- Civil protection
- Backup communication
- Independent and flexible telecommunication networks for governments and companies







## Data center for Premium customers



3D ANSICHT BAUTEIL 3-4

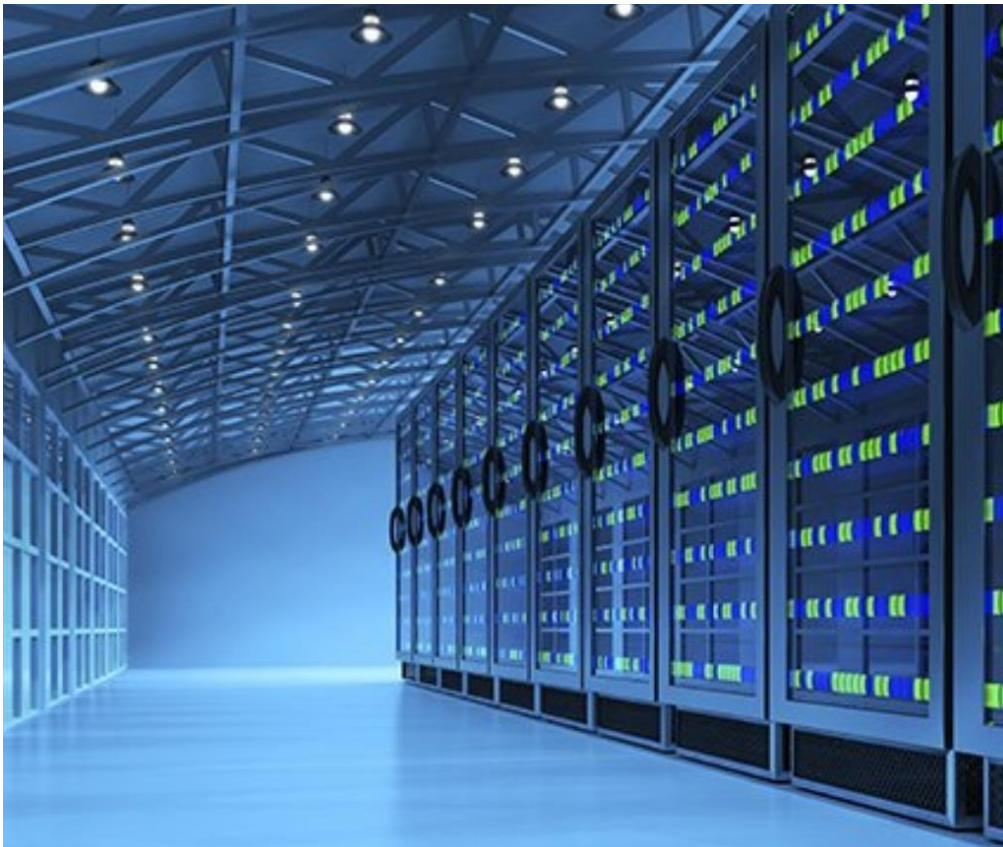


3D ANSICHT BAUTEIL 1-2





## Cloud Center für Business Kunden



3D ANSICHT ACHSE M-12

